

Restoring Forests to Protect Water at its Source

New Mexico's forested mountains serve as our water towers, providing freshwater for towns, communities and cities downstream. As well, mountain forests significantly contribute to air quality, provide firewood and timber for community use, and serve as an important destination for those who love recreating in the Land of Enchantment.

However, wildfires - followed by post-fire flooding - threaten New Mexico's forests and water security. And those fires have been increasing in size and number. The Rio Grande Water Fund, launched in 2014, is a solution to securing clean water by restoring forests to a healthy state.

Working Together to Create Healthy Forests

Large-scale, proactive steps are necessary to protect 1.7 million acres of forests in the Rio Grande Watershed. That's why nearly 90 organizations have come together in a collaborative partnership—the Rio Grande Water Fund—to generate sustainable funding for large-scale forest and watershed restoration treatments, educating youth about the connections between forests and water, providing research to policy makers, and creating forestry and wood products jobs.

Long-term Conservation Goals

- Restore 600,000 acres of the forested watershed to reduce the risk of catastrophic fire and subsequent contamination of the Rio Grande.
- Secure clean water for wildlife and 1 million New Mexicans.
- Offer economic opportunity by creating jobs in the Water Fund area, approximately 20 jobs for every \$1,000,000 invested.
- Reach hundreds of students and youth each year through educational programs focusing on the connection between forest health and water supplies.

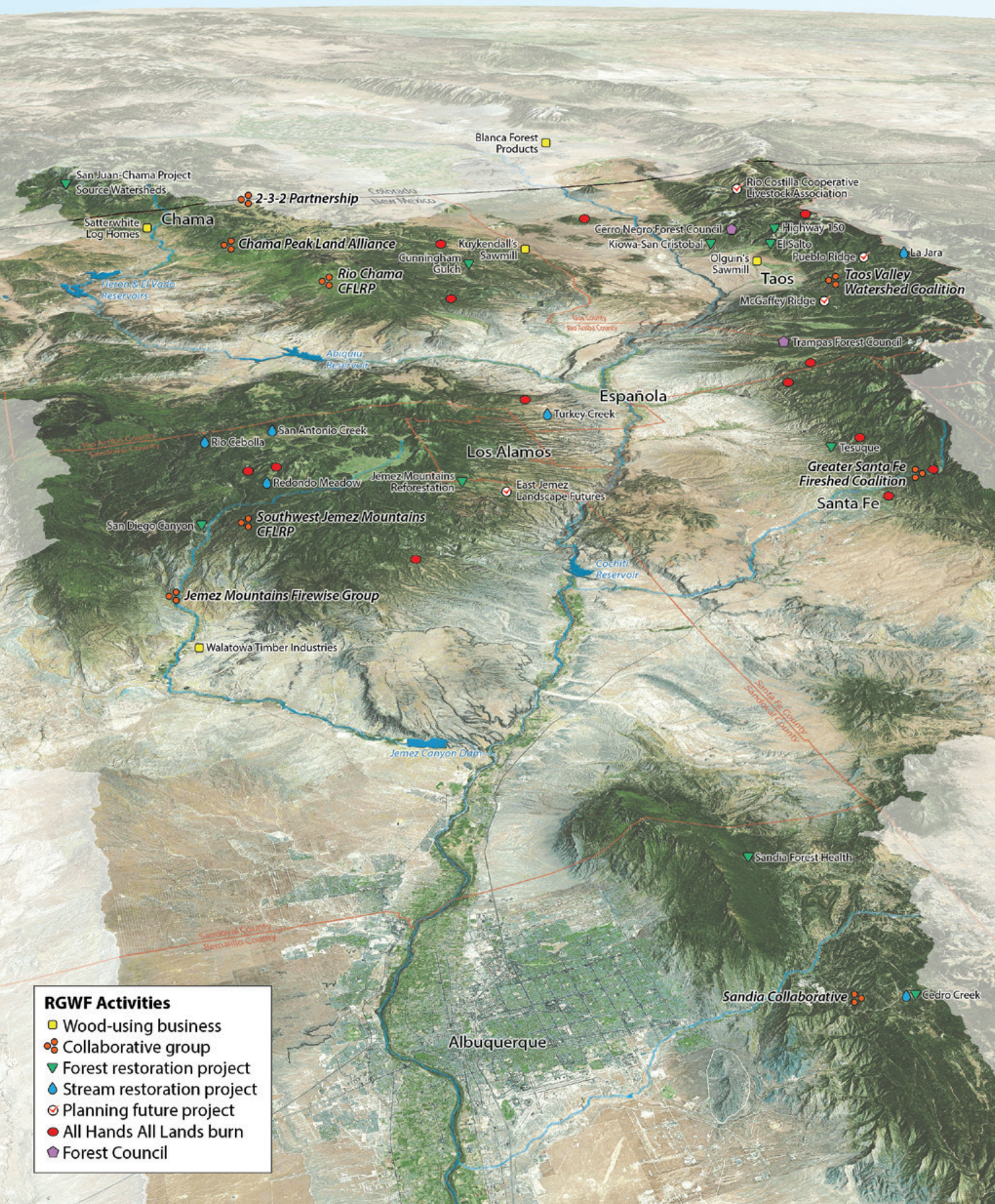


OUR VISION

Our vision is of healthy forests and watersheds that provide a reliable supply of high-quality Rio Grande water and other benefits for New Mexico for generations to come. With your support, we can continue this critical conservation work!



RIO GRANDE WATER FUND PROJECTS



- RGWF Activities**
- Wood-using business
 - Collaborative group
 - ▼ Forest restoration project
 - ◆ Stream restoration project
 - ⊙ Planning future project
 - All Hands All Lands burn
 - Forest Council

San Juan-Chama Project Source Watersheds

Satterwhite Log Homes

Chama

2-3-2 Partnership

Chama Peak Land Alliance

Rio Chama CFLRP

Blanca Forest Products

Kuykendall's Sawmill

Cunningham Gulch

Cerro Negro Forest Council

Kiowa-San Cristobal

Rio Costilla Cooperative Livestock Association

Highway 150

El Salto

Pueblo Ridge

Olguin's Sawmill

McGaffey Ridge

Taos Valley Watershed Coalition

La Jara

Trampas Forest Council

Abiquiu Reservoir

Espanola

Turkey Creek

Los Alamos

Rio Cibola

San Antonio Creek

Redondo Meadow

Jemez Mountains Reforestation

Southwest Jemez Mountains CFLRP

San Diego Canyon

Jemez Mountains Firewise Group

Walatowa Timber Industries

East Jemez Landscape Futures

Cochiti Reservoir

Greater Santa Fe Fireshed Coalition

Santa Fe

Tesuque

Jemez Canyon Dam

Sandia Forest Health

Sandia Collaborative

Gedro Creek

Albuquerque

Sandoval County Bernalillo County

Santa Fe County Sandoval County

San Juan County Rio Arriba County

Rio Arriba County Sandoval County